



Rural Migration Aspects in Latvia

Dr.geogr. Zenija Kruzmetra
Latvia University of Agriculture

III CONGRESS OF LITHUANIAN GEOGRAPHERS
26-27 September 2014, Vilnius



Content

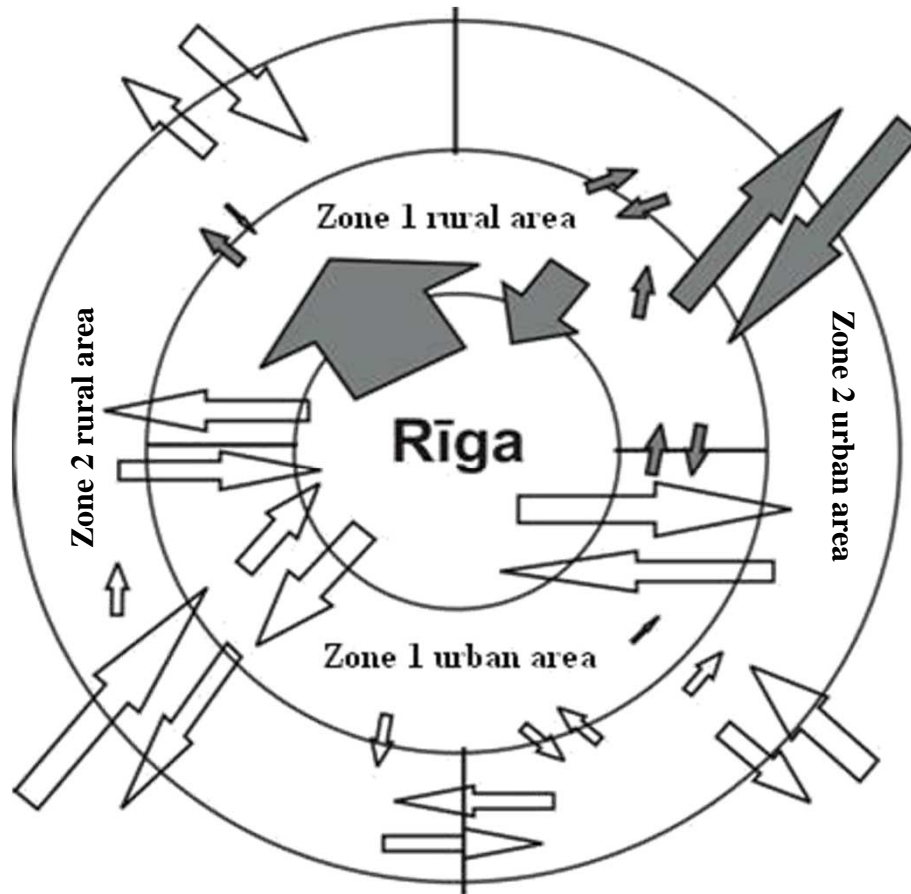
1. Complexity of rural migration flows
2. Population dynamics Latvia
3. Rural migration background
4. Migration & changes in population structure
5. Migration & labour market
6. Final remarks



Complexity of Rural Migration Flows



Complexity of Rural Migration Flows



Space of flows /M.Castells/

Population flows
Labour market flows
Financial flows
Capital
Knowledge etc.



Society structure

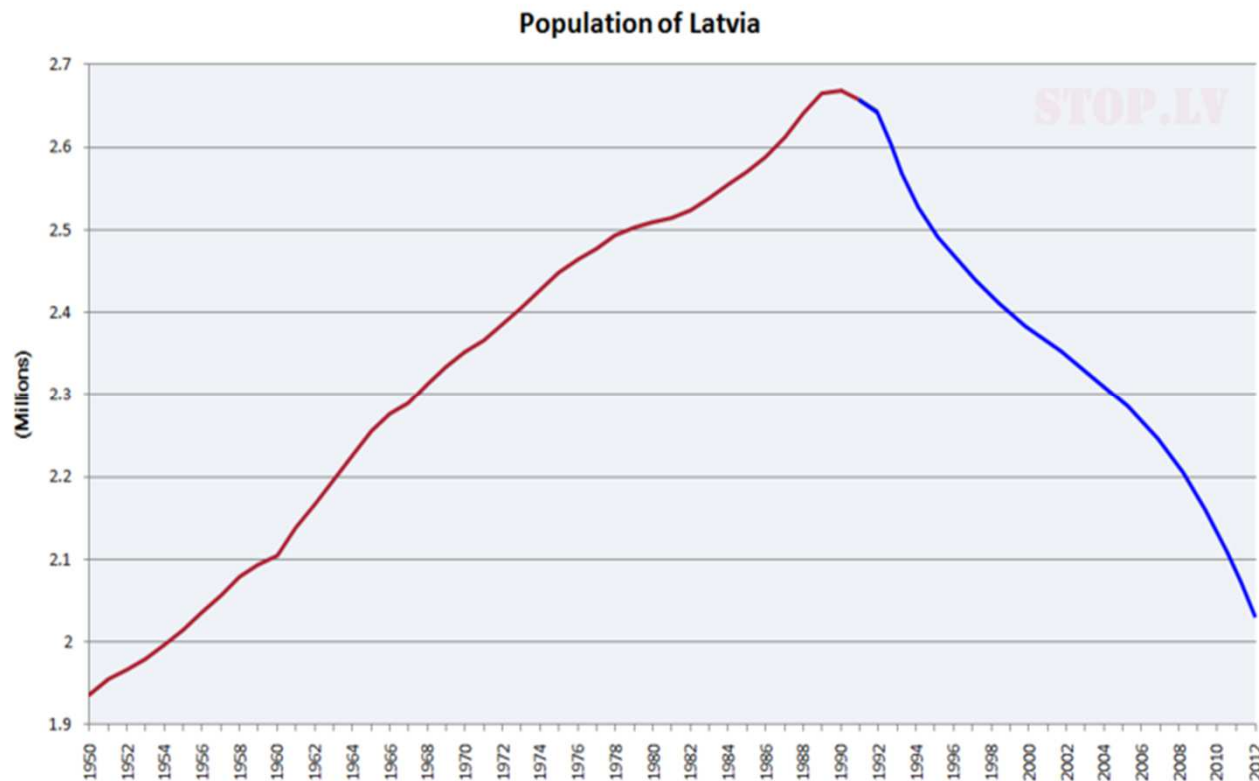
Source: Kruzmetra Z. , 2011



Population Dynamics



Population Changes 1950-2012



- The population of Latvia is shrinking both because of reduction in natural growth and because of migration.
- Population number in non-urban areas around urban centres by contrast, are slightly increasing

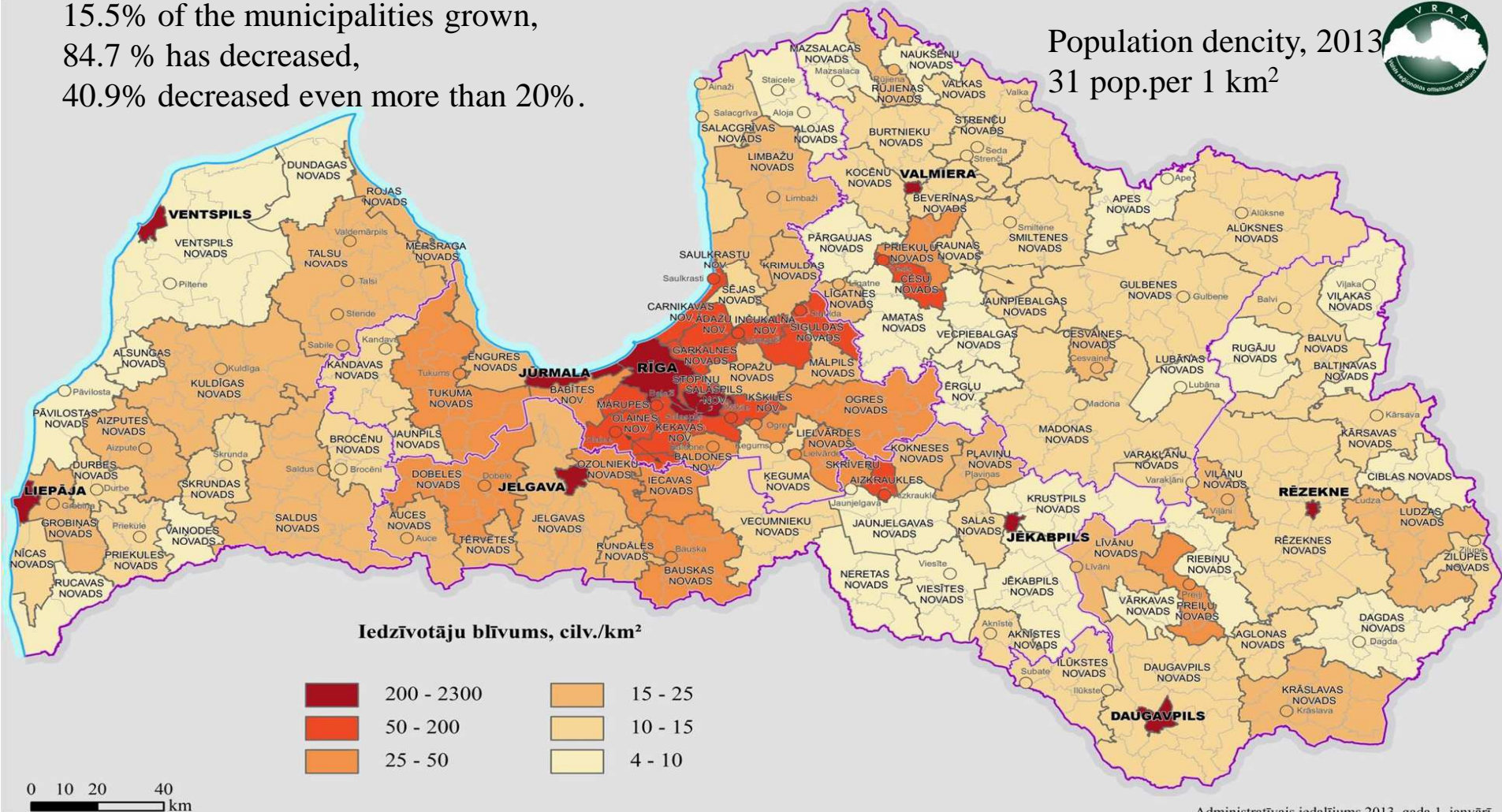


Population Dynamics 2000-2013

population shrank from 2.2 million to just 2.0 million

15.5% of the municipalities grown,
84.7% has decreased,
40.9% decreased even more than 20%.

Population density, 2013
31 pop.per 1 km²



Administratīvais iedalījums 2013. gada 1. janvārī



Rural Migration Background- Rural Transformations



Rural Transformations

The end of the 20-th century and the beginning of the 21-st century are characterized with number of **system-innovations or transitions** /Geels, 2002/ in the rural areas

GLOBAL and EUROPEAN

- From industrial society to postindustrial society
- From traditional society to modern society
- From productivism to postproductivism
- From production to consumption

EASTERN EUROPEAN

- From collectivism to postcollectivism

The features of these processes may be observed in Latvia too and lead the structural changes of the rural areas and society



Rural Transformations

- The factors influencing the processes in total contain very different phenomena:

- regaining of state independence (1991);

- land reform - reestablishment of private property;

- land restitution to former owners;

- from large farms to small farms;

- massive economical recession.



Rural Transformations

- joining the European Union (2004)
- integration in a common European economic space
- growing mobility
- spreading of the globalization
- development of a minority of technologically up-to-date business farms and a majority of small-scale producers and often subsistence farms
- capability of people to adapt to the new system of values
- loss of the sense of ideological and economic protection

(Shoard 1980; Body 1982; Potter 1998)



Rural Transformations

Political and economical changes serve as a drive for:

- demographical changes
- labour market & mobility & society structure
- formation of new economic elite and new configuration of class, gender and interests

In the post-socialism conditions, the formation of **new groups of population** connected with the entrepreneurship of different character as well as structural unemployed groups are growing too



Mobility, Depopulation & Changes in Population Structure



Theoretical Background

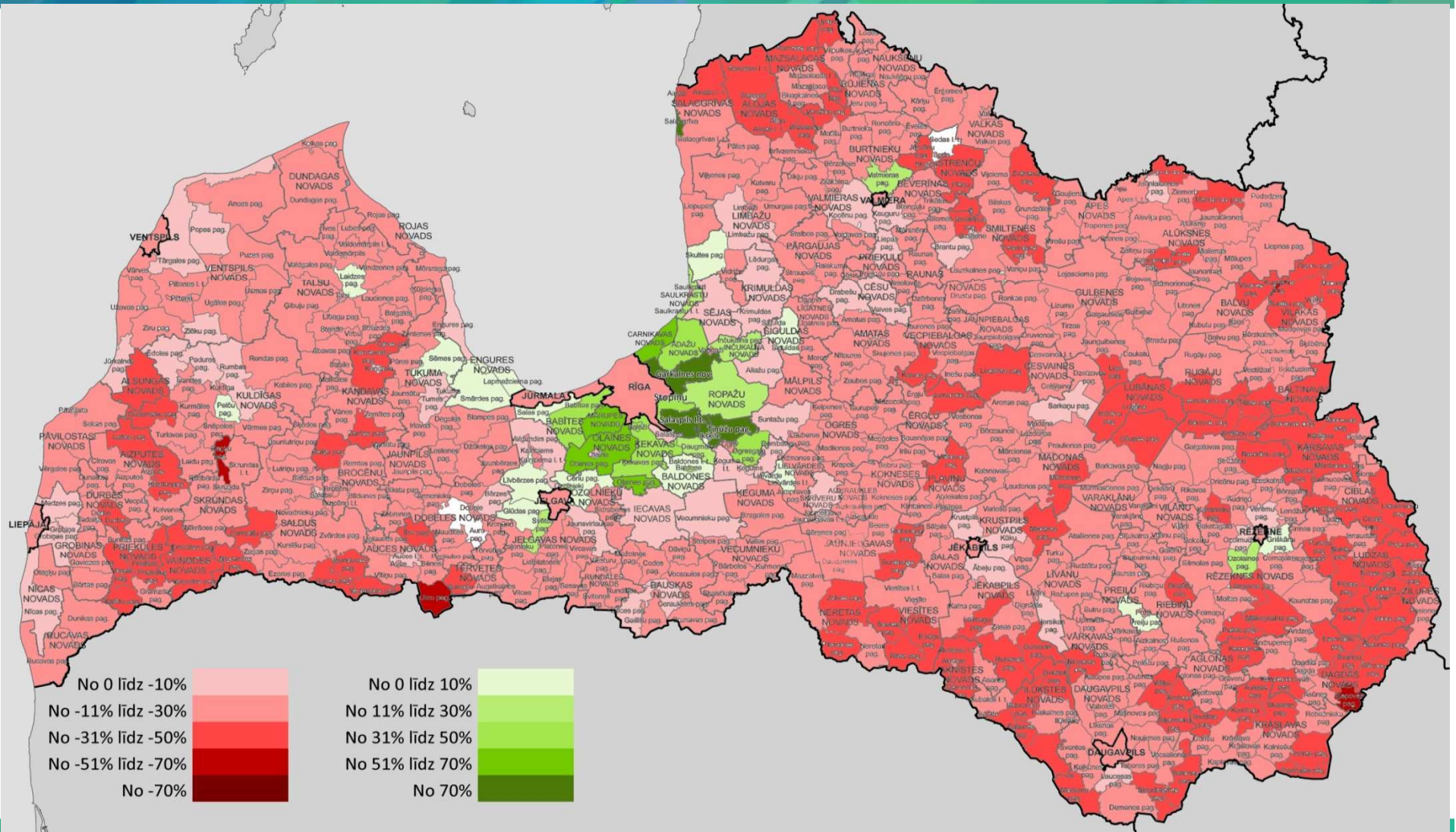
Geographical Mobility & Social Structure

- The power of geographical mobility to effect society structure depends on 3 main factors:
 - 1) the numbers involved;
 - 2) the duration of the movement;
 - 3) its demographical and class composition.
- The movements composed of persons with higher human capital would have a greater impact on receiving societies due of the grater capacity

Portes A. (2008)

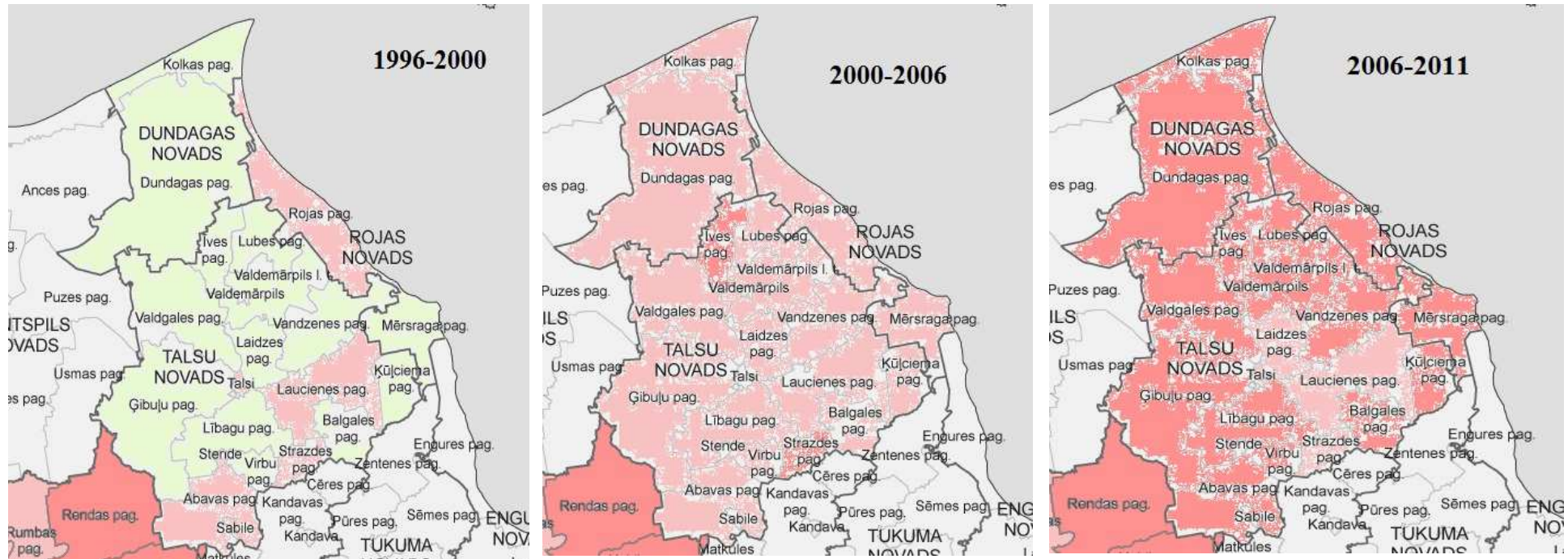


Population Changes 1996-2011





Mapping Population Changes: Talsu, Dundagas, Rojas Municipality 1996-2011



1996-2000 dominate areas 0-10% increase
2000-2006 dominate areas 0-10% decrease
2006-2011 dominate areas 11-30% decrease



Population Structure by Age & Sex, 2012

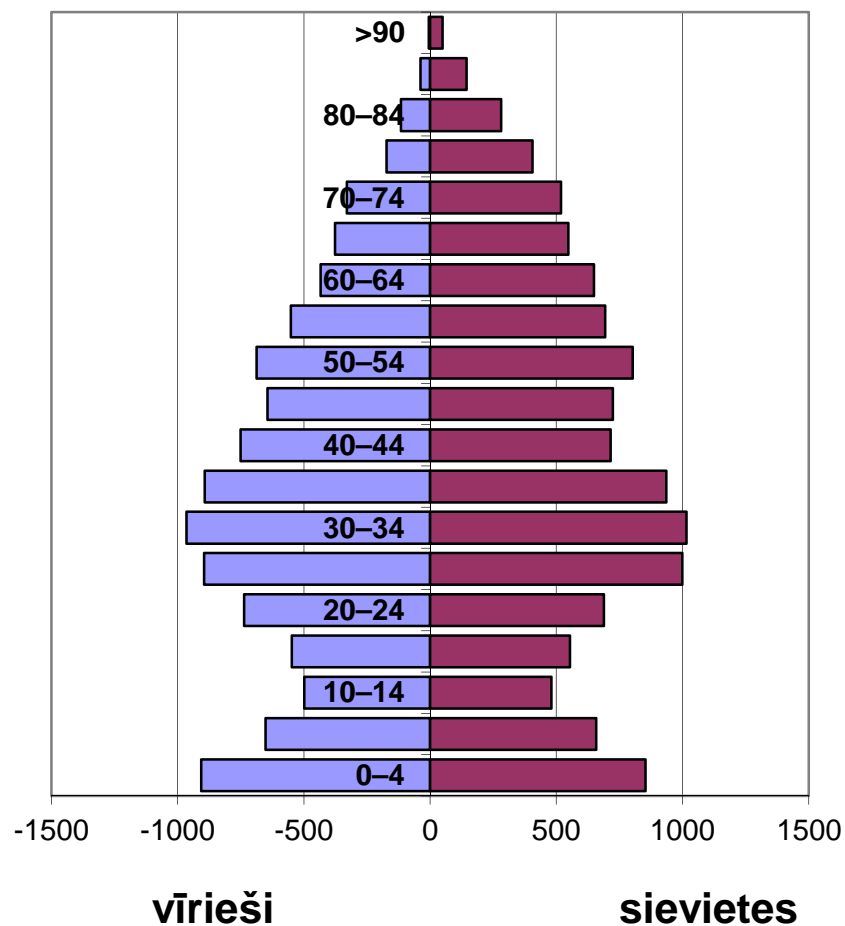
Age group	Male	Female
0 - 15	11,6 %	11,0 %
16 - 62	32,0 %	33,3 %
+ 63	4,2 %	7,9 %

- **Marupe municipality** – peri-urban – optimal

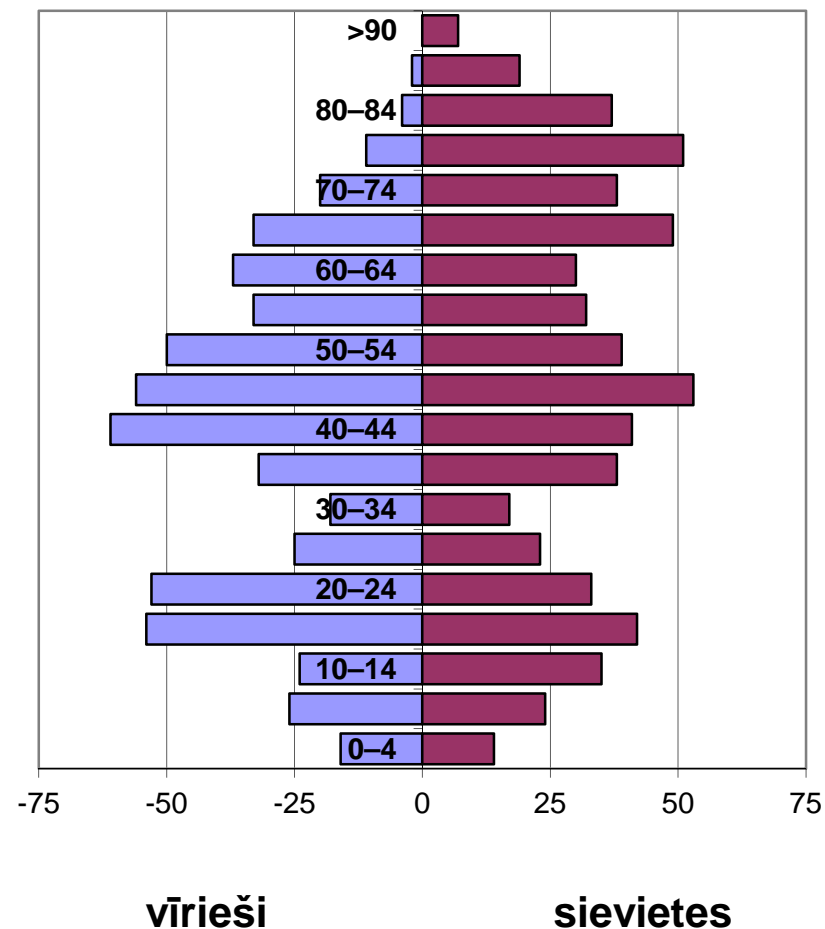
Age group	Male	Female
0 - 15	6,0 %	5,2 %
16 - 62	37,4 %	30,2 %
+ 63	7,6 %	13,6 %

- **Akniste municipality** – remout - unbalanced

Ķekavas Municipality, 2011

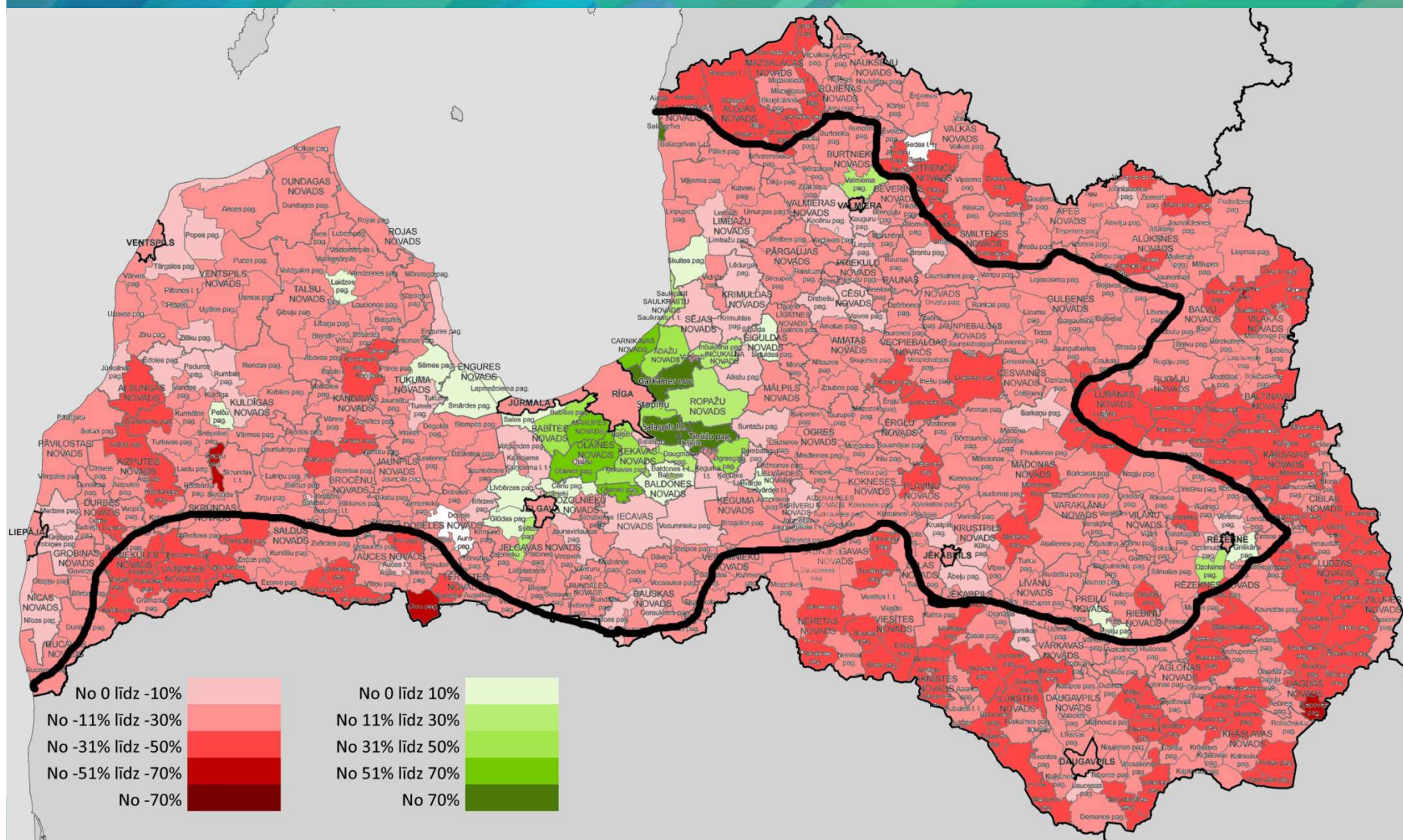


Baltinavas Municipality, 2011



SAEIMAS DEMOGRĀFIJAS APAKŠKOMISIJA, 2014.GADA 11.MARTĀ
 ILMĀRS MEŽS, Dr.hist.

Border Problem: Population Decrease by 51-70%, 1996-2011





Changes in Population Structure

Due to geographical mobility:

- in peri-urban areas social structure becomes more diverse and more optimal for development;
- in remote non-urban areas social structure becomes less diverse and rather unbalanced for future development, for sustainable development



Mobility & Labour Market



From stability to mobility

- Due to the **political transformations** at the end of the 20th century the **structures of national economics** and sector divisions have changed
- **Labour market changes** - the proportion of people employed in agriculture and the industrial sector in Latvia has noticeably diminished and many private sector employers have entered the labour market, they also make up the majority of employers today
- Employed in agriculture 2000-2009 decline by 38,2%
(The fifth highest reduction: Bulgaria-48,1%, Estonia-55%, Romania-41,1%, Slovakia - 42,5%).
Average reduction EU 24,9%
- New survival strategies, problem solutions – **mobility**

Data about Occupied Posts by Industry of Economic Activity in NACE groups. Central Statistical Bureau. Available: <http://data.csb.gov.lv/>



Mobility & Labour Market & Society Structure

- The population mobility could be largely explained by labour market processes
- Weakness of rural labour market stimulates multi-step population outflows
- **Mobility as a life strategy** - formation of structural dependency on migration

Changes in society structure:

- 1) new population groups in rural areas - commuters, urban newcomers, “project class”
- 2) age, sex structure – unbalanced (depopulation, ageing)
- 3) weakens communities (except peri-urban areas)



Labour Market & Mobility & Society Structure

- The population mobility could be largely explained by labour market processes
- Due to the political transformations of the end of the 20th century, the structures of national economics and sector divisions have changed
- The proportion of people employed in agriculture and industrial sector in Latvia has noticeably diminished and many private sector employers have entered the labour market; they also make up the majority of employers today

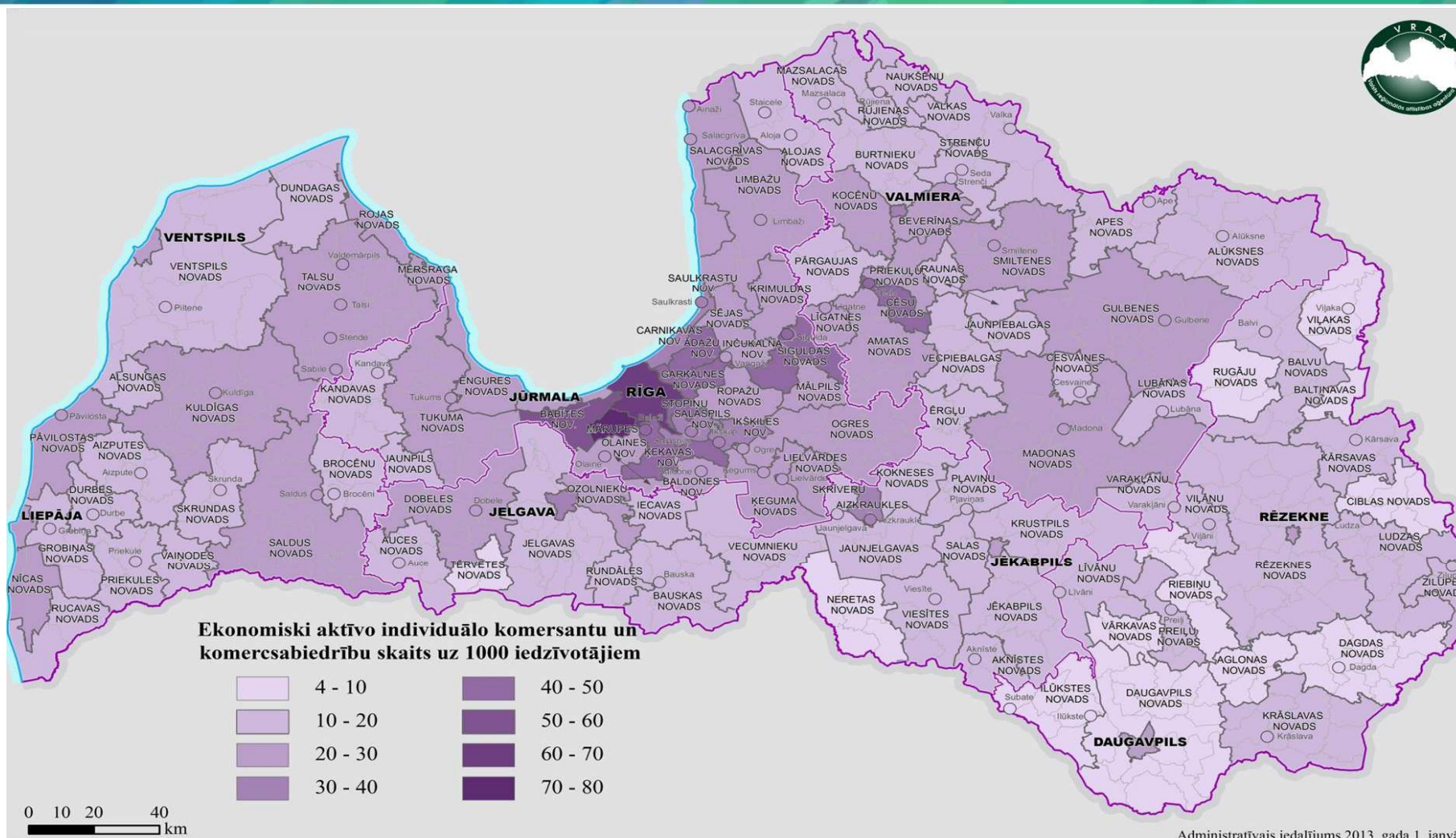
Data about Occupied Posts by Industry of Economic Activity in NACE groups. *Central Statistical Bureau*. Available: <http://data.csb.gov.lv/>



- Factor of population mobility in rural areas expressed as **nostalgia for large industrial type enterprises/collective farms** that would employ a large number of the local population
- It is expressed repeatedly in the interviews with municipality officials, which could be interpreted as a barrier for involvement of new forms of employment and encouragement of outflow of rural population



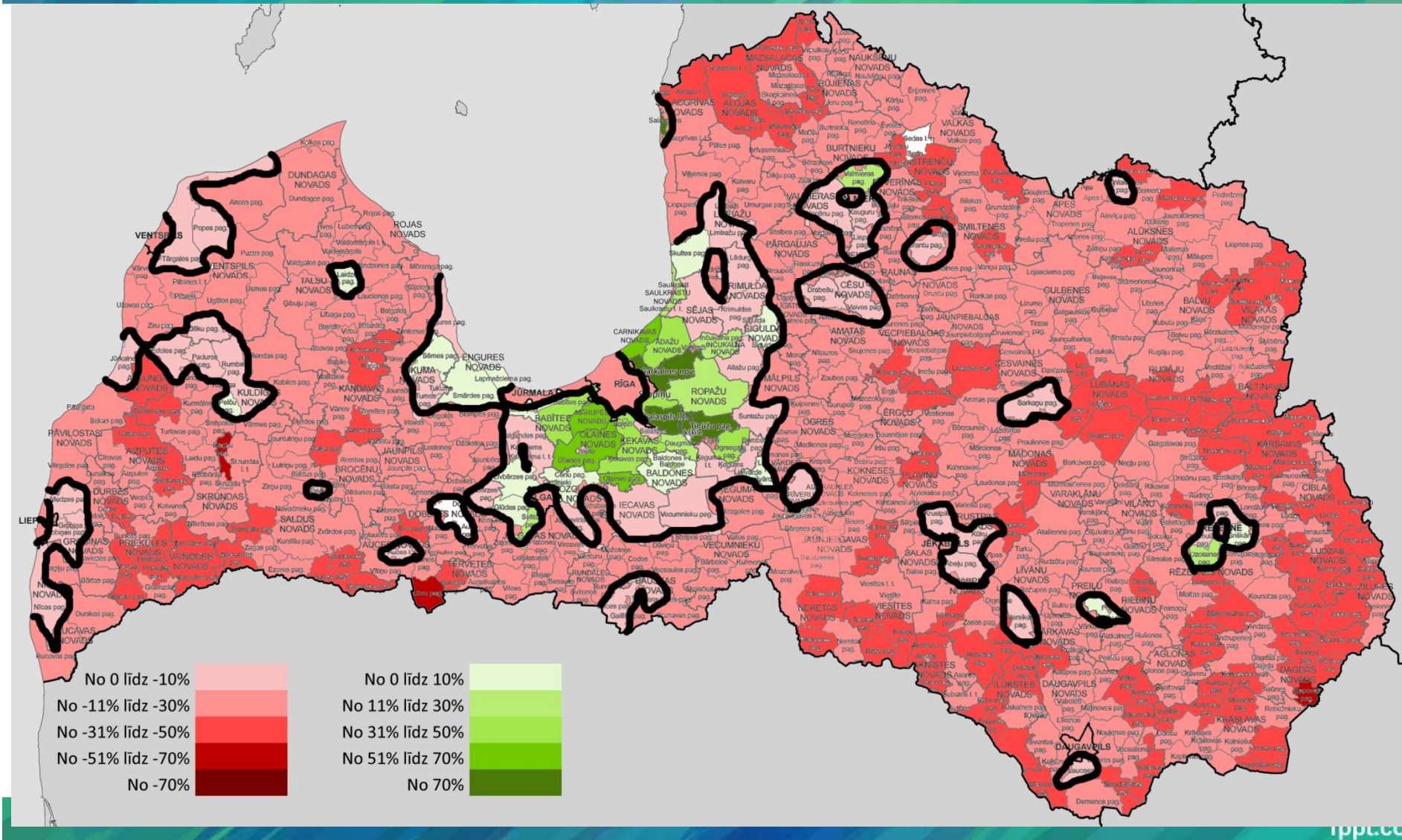
Economically Active Individual Merchants and Commercial Companies per 1000 Inhabitants in Municipalities, 2011





Why so Different Population and Development Scenarios?

Tomēr kāpēc vieni pagasti attīstās labāk kā citi?





Migration & Innovations

- Innovations as a drive to minimize/diminish economical migration

Innovation level in Latvia is the lowest in Baltic states

– low activity of innovation actions, low farm initiative

Innovative entrepreneurship: 29% in Latvia, 35% in Lithuania, 56% in Estonia

/data from LR Ministry of Finances 2014/

- This is dormant potential for the migration diminishing



Final Remarks



Final Remarks

- Current occupational structure is disadvantaged for socio-economic non-urban development
- Weakness of non-urban labour market stimulates multi-step population outflows
- Disadvantaged occupational structure could be compensated by accessibility of urban centres
- Space of financial, technological, administration etc. flows does not cover remote non-urban areas – and creates new outflows



Final Remarks

- Formation of structural dependency on migration (of both origin and receiving areas)
Veidojas noteikta strukturālā atkarība no migrācijas (gan izcelsmes, gan uzņēmējās valstīs)
- Structural adjustment erodes public services
Strukturālā korekcija grauj sabiedriskos pakalpojumus
- Weakens communities *vājina kopienas*
- Transformation - **From once-in-a-lifetime migration to → mobility as a life strategy**
- People belong to more than one territorial community



Hot problems

- Rural depopulation & out migration
- Decreasing of work places and services; emigration and ageing of population, weak infrastructure
- Insufficient and spatially unequal social capital
- Lack of long-term rural development strategies



Literature

- Rasnaca L, **Kruzmetra Z.** (2014) The Population and Labour Market Flows in the Ex-Socialist Non-urban Areas of Latvia, in Babiakova B., Bandlerova A., Brown D., Kaleta A., Kulcsar L.J., Singelmann J. (ed) Social and Economic Transformations Affecting Rural people and Communities in Central and Eastern Europe since 1990, Nitra, Slovak University of Agriculture in Nitra.
- **Kruzmetra Z.** (2011) Changes in Rural Settlement Patterns of Peri-urban Areas of Latvia, University of Latvia, Riga, 74p.
- Krisjane, Z., Eglite, P., Bauls, A., Lulle, A., Berzins, M., Brants, M., Cunska, C., Gnedovska, I., Ivbulis, B., **Kruzmetra, Z.**, Kule, L., Markausa, I.M., Niklass, M., Pavlina, I., Titova, N., Vanaga, S., Vilcins, A. and Zarina, I.B. (2007) Darbaspēka ģeogrāfiskā mobilitāte (The Geographic Mobility of the Labour Force). Rīga: University of Latvia, Ministry of Welfare, 240 pp.
- Kuis J., **Kruzmetra Z.**, Bite D. (2008) Pašvaldību stratēģijas teritorijas ilgtspējīgā attīstībā/Strategies of Local Municipalities for Sustainable Development of Territory. „Economic Science for Rural Development” Proceedings of the International Scientific Conference, Nr. 15, Jelgava, 88-94 lpp.
- **Kruzmetra Z.**, Rasnaca L. (2007) Small Towns as Employment and Service Centers. Ģeogrāfiski Raksti/ Folia Geographica, 13, 134–145p.
- Rasnača L, **Kruzmetra Z.**, Bite D. (2007) “Changes in the Towns and Countryside of Latvia after Accession to the European Union”/ LU, Stratēģiskās Analīzes Komisija “Uncertain Transformations – New Domestic and International Challenges” Proceedings of the International Conference Riga, November 9-11, 2006, LU 2007, pp. 343-357p.



Literature

- Doogan K. *Long-term Employment and the Restructuring of the Labour market in Europe*, *Time & Society*, Vol.14 no.1, 2005, Sage Publications, p. 66.
- Ford T. (1999) Understanding Population Growth in the Peri-Urban Region. *International Journal of Population Geography*, Vol.5, p.297-311.
- Marsden T., Smith E. Ecological Entrepreneurship: Sustainable Development in Local Communities through Quality Food Production and Local Branding. *Geoforum*, Vol.36, 2005, pp. 440-451.
- Stenning A. Re-placing Work: Economic Transformations and the Shape of a Community in Post-socialist Poland. *Work, Employment & Society*, Vol.19, 2005, pp. 235-259.
- Central Statistical Bureau of Latvia, <http://www.csb.gov.lv/sites/default/files/infograph.pdf>
- Latvia. Human Development Report 2012/2013. Sustainable Nation.
- Survey “Development of Regions in Latvia”, 2013 www.vraa.gov.lv
- Shrinking Regions: a Paradigm Shift in Demography and Territorial Development, Regional Development 2008



Thank You for Attention!

