

The background of the slide is a photograph of a wide, calm river flowing through a lush green landscape. The river is the central focus, with green grassy banks on both sides. In the distance, a line of trees marks the horizon under a clear, bright blue sky. The overall scene is peaceful and natural.

**III CONGRESS OF LITHUANIAN GEOGRAPHERS**

Vilnius, 26-27th of September 2014

Valentin Yatsukhno<sup>1</sup>, Zenonas Gulbinas<sup>2</sup>, Pavel Korotkich<sup>3</sup>

**Concept of biosphere reserve at the Lithuanian-Belarus  
border area: geographical aspects and perspectives**

<sup>1</sup> Belarusian State University, Department of Geography,  
yatsukhno@bsu.by

<sup>2</sup> Lithuanian university of Educational Sciences,  
zenonas.gulbinas@leu.lt

<sup>3</sup> Public Institution NATURE HERITAGE FUND,  
pavel.korotkich@gmail.com



This project is funded by the  
European Union



The presentation is prepared under the realization of International project of Latvia, Lithuania and Belarus Cross Border Cooperation Programme with the European Neighbourhood and Partnership Instrument EC Decision C(2008)8113



Project “Management of Alytus-Grodno Transboundary Protected Areas and Promotion of their Integration into Pan-European Ecological Network”, LLB-2-175. Leading organization – Public Institution Nature Heritage Fund.

**Partners:**

- Belarusian State University
- Yanka Kupala State University of Grodno
- Administration of Dzūkija national park and Čepkeliai strict nature reserve

**Associates:**

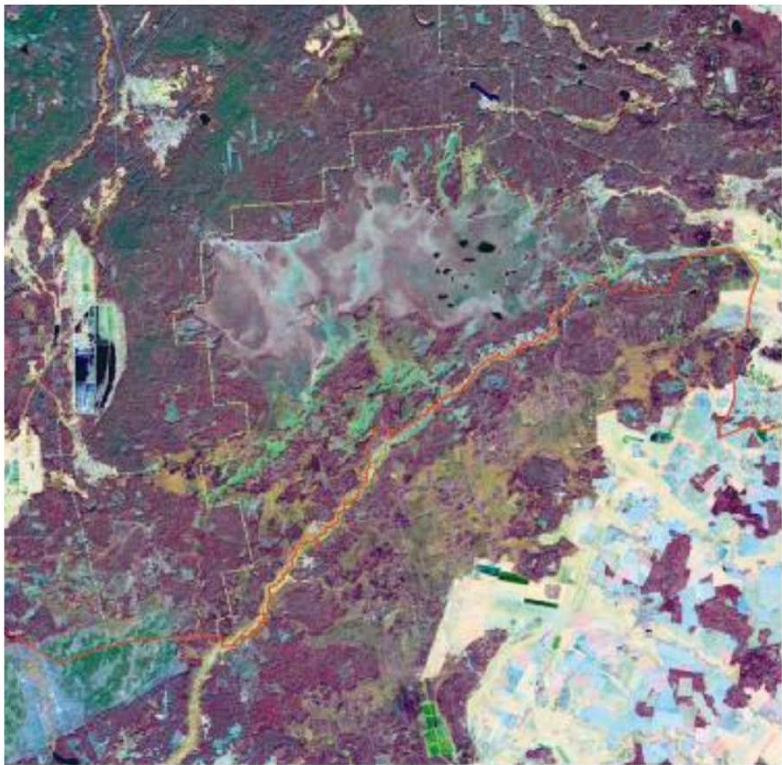
- Grodno Regional Committee of Nature Resources and Environmental Protection
- State Environmental Institution “Republican Landscape Reserve “Ozery”
- State Environmental Institution “Republican Landscape Reserve “Kotra”
- Žuvintas biosphere reserve
- Veisiejai Regional Park
- State Service for Protected Areas under Ministry of Environment of the Republic of Lithuania

*The proposed Action is aimed at consolidating Lithuanian-Belarus' initiatives for advancement of cross-country co-operation to jointly managed protected areas stretching through state borders and strengthening capacities for improved nature conservation.*

- Preparation of uniform planning and management methodology for Čepkeliai - Kotra border protected areas
- Elaboration of concept basis for establishing trans-boundary Druskininkai-Grodno biosphere reserve
- Preparation of the joint Čepkeliai - Kotra trans-boundary management plan
- Improvement of protected areas planning knowledge and skills between partners and associated partners
- Preparation and publishing of a brochure presenting the trans-boundary protected areas of Alytus-Grodno region
- Creation of general Alytus-Grodno region trans-boundary map of protected areas

## Čepkeliai-Kotra

Transboundary area is a single forest-bog complex, including upland forest wetlands, bogs, fens and transitional, meadows and forests, the valleys of small rivers. It is the only undeveloped forest-bog complex in the south of Lithuania and in the north-western region of Belarus



### Actions:

- Preparation of joint transboundary management plan
- Harmonization of regulatory framework
- Facilitated networking, experience and know-how sharing
- Marketing of protected area nature values
- Determination of opportunities for involvement of local communities into nature management activities, eco-tourism, education, nature guiding, traditional crafts, promotion of local traditions and heritage

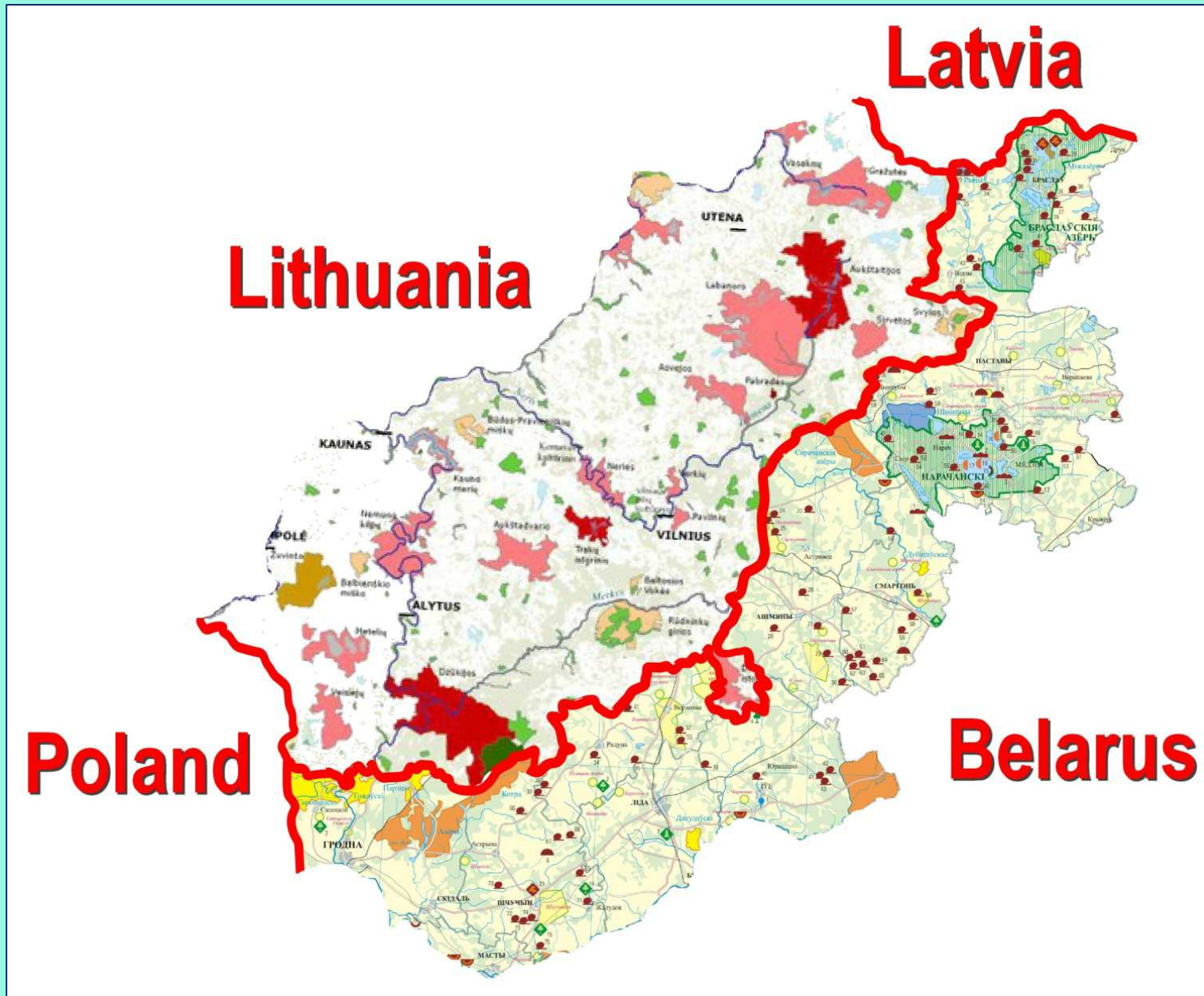
## Geographical position of Belarus-Lithuania study border area

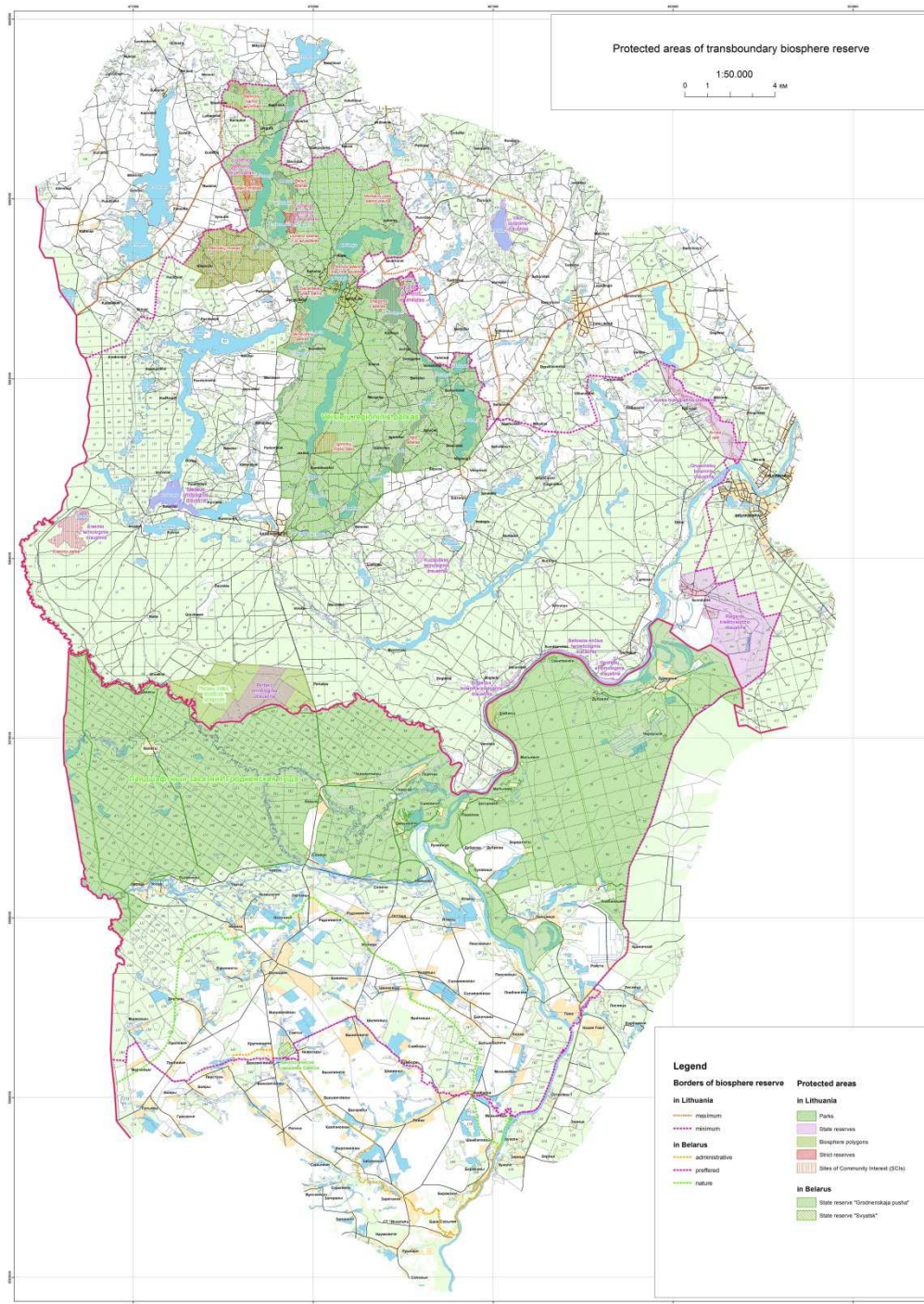


## Categories nature protected areas (NPA) of Belarus and Lithuania and their correlation with IUCN

Categories NPA	Belarus	Lithuania	IUCN
National park	+	+	II
State reserve	+	+	Ia
Regional park	-	+	VI
<b>Reserves:</b>			
landscape	+	+	V
geological	+	+	III
hydrological	+	+	III
biological	+	-	III
botanical	-	+	III
zoological	-	+	III
pedological	-	+	III
telmological	-	+	III
botanic-zoological	-	+	III
talasological	-	+	V
Nature monuments	+	+	III

# Transboundary Nature Protected Areas of Belarus and Lithuania

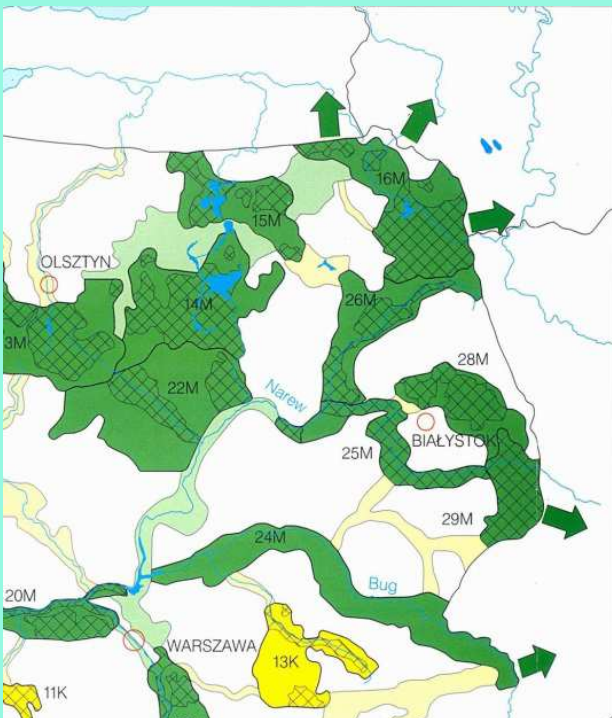
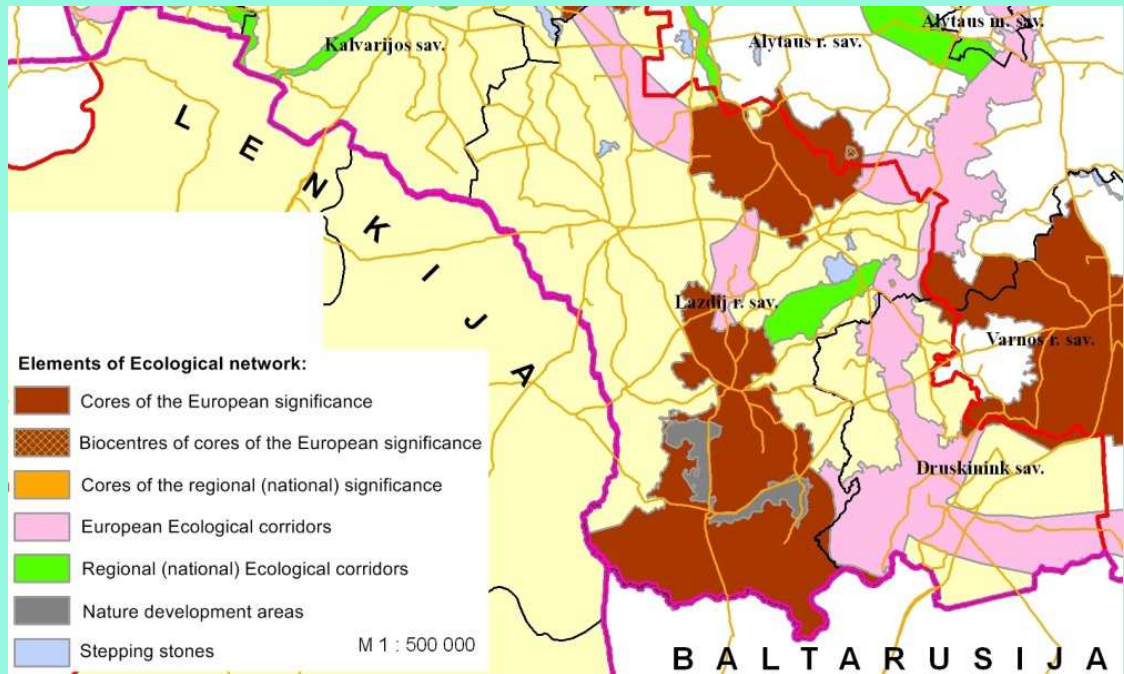




## Protected areas in Belarus-Lithuania transboundary biosphere reserve

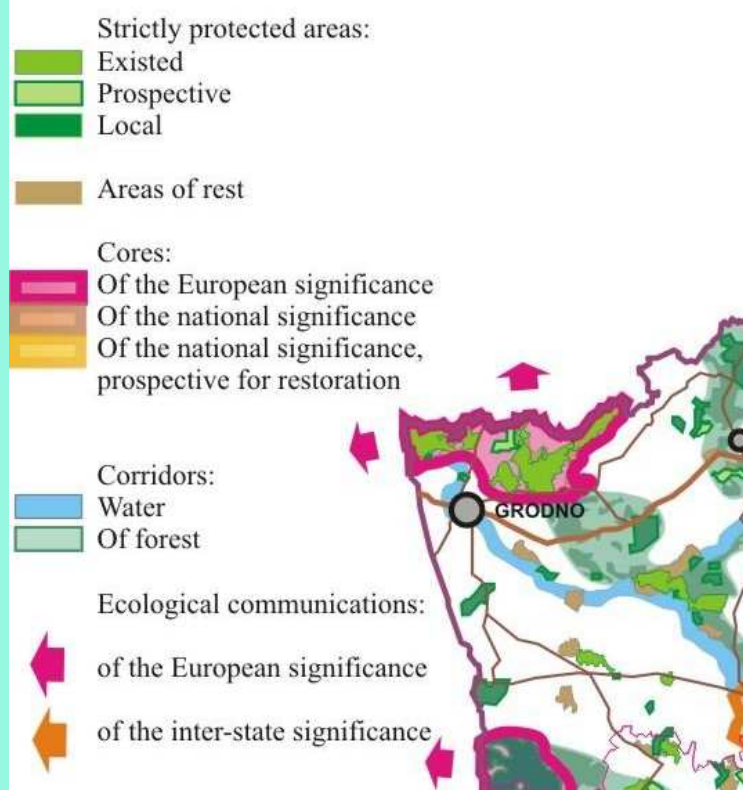


# Integration of transboundary nature protected areas of Belarus, Lithuania and Poland into the Pan-European Ecological Network

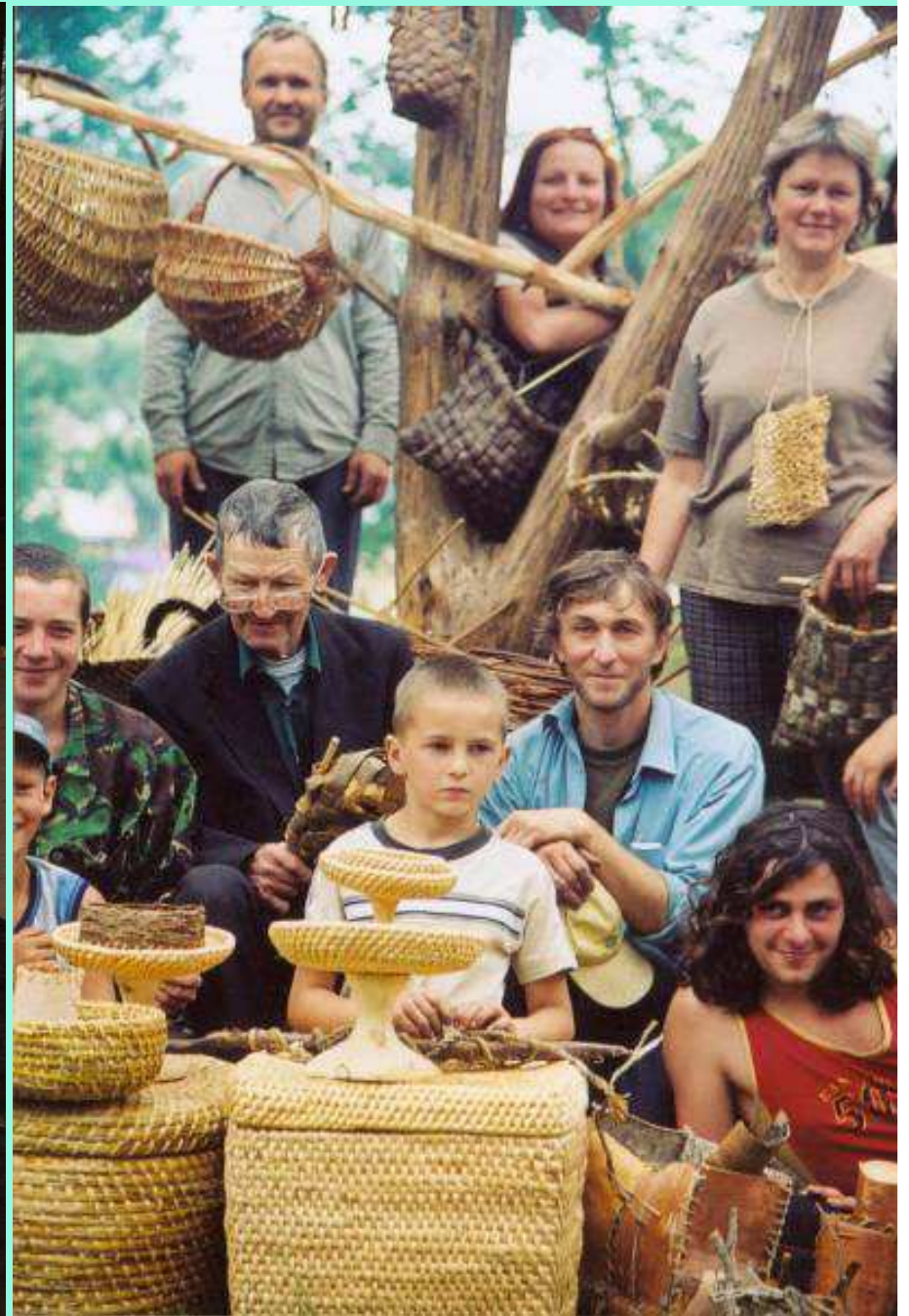


## KRAJOWA SIEĆ EKOLOGICZNA NATIONAL ECOLOGICAL NETWORK

- 0 100 km
- 22M obszary węzłowe o znaczeniu międzynarodowym international core areas
- 14M, 15M, 16M, 26M, 28M biocentra i strefy buforowe biocentres and buffer zones
- 13K obszary węzłowe o znaczeniu krajowym national core areas
- 14M, 15M, 16M, 26M, 28M biocentra i strefy buforowe biocentres and buffer zones
- 20M, 24M, 25M, 29M korytarze ekologiczne o znaczeniu międzynarodowym international ecological corridors
- 13K korytarze ekologiczne o znaczeniu krajowym national ecological corridors
- 20M, 24M, 25M, 29M kierunki powiązań ekologicznych directions of ecological connections







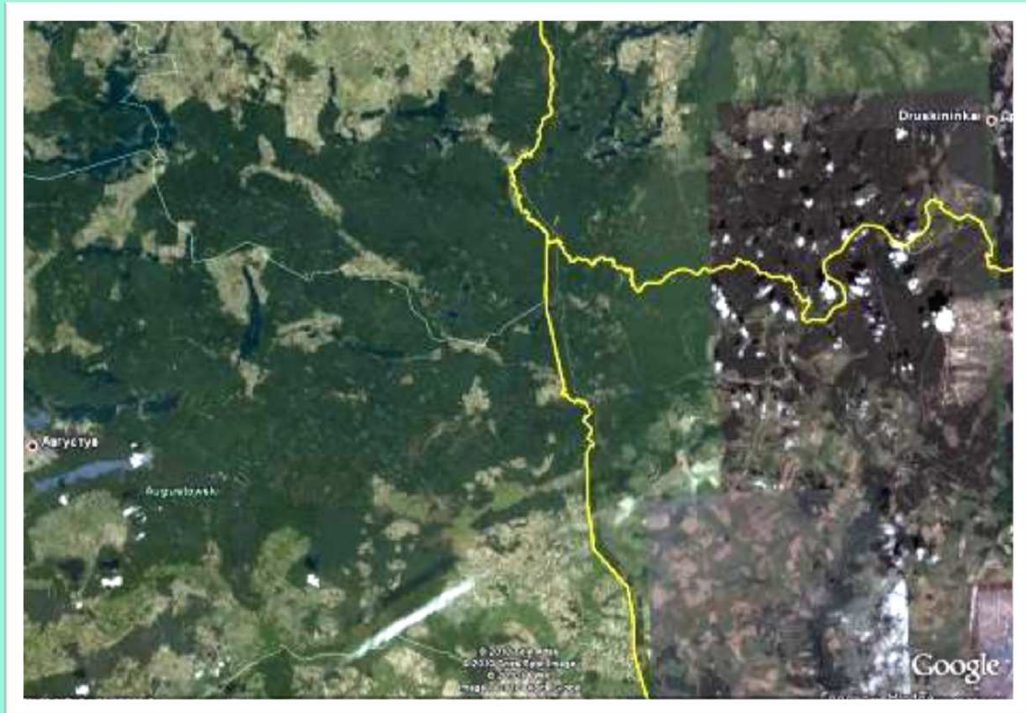








# Future Belarus-Lithuania-Poland transboundary biosphere reserve



## Actions:

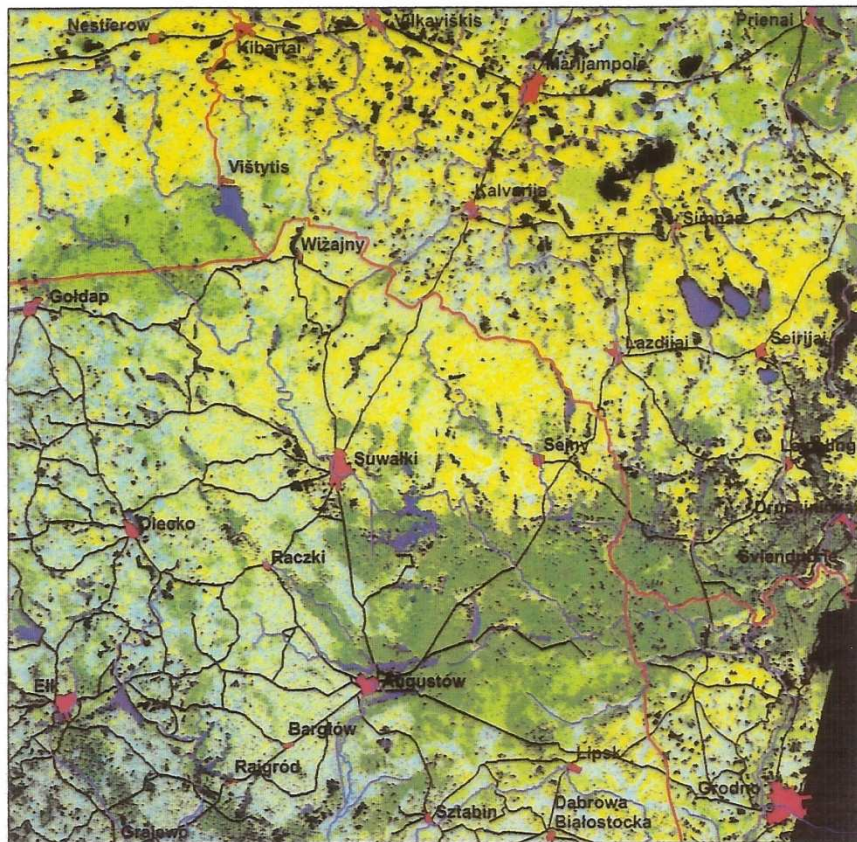
- Elaboration of basis concept for establishment of future biosphere reserve as integral part of Pan-European Ecological Network
- Determination of possible boundaries and functional zones transboundary biosphere reserve
- Preparation of the biosphere reserve map in scale 1:50 000



Total area of transboundary biosphere reserve is about 160 000 ha

1979

2009



Classified Landsat MSS Image (03.09.1979)

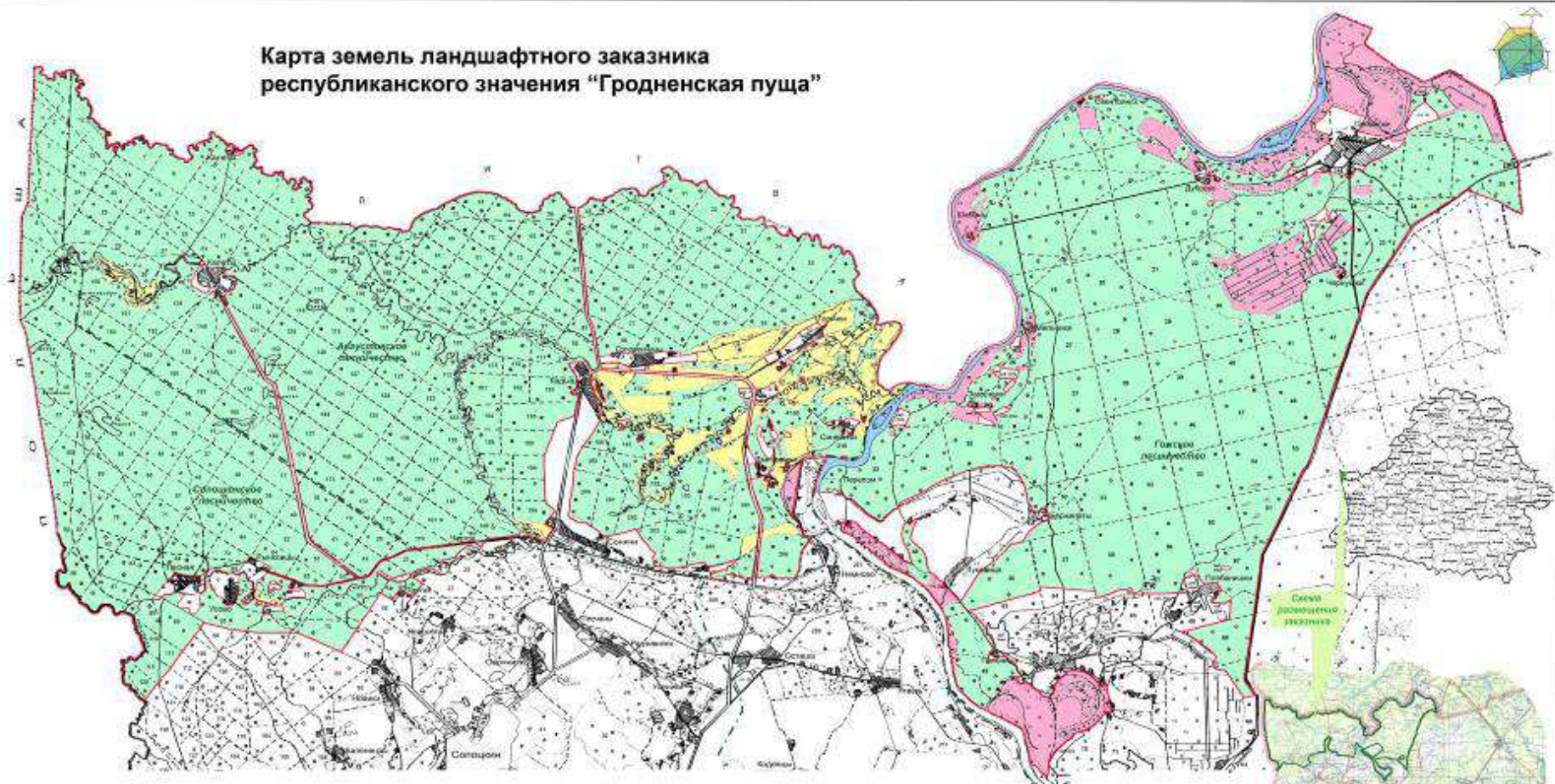


Classified Landsat MSS Image (23.09.2009)



# Existing on the territory of Belarus landscape reserve as a part of future transboundary biosphere reserve

Карта земель ландшафтного заказника республиканского значения "Гродненская пуща"



Земельно-хозяйство и категория земель

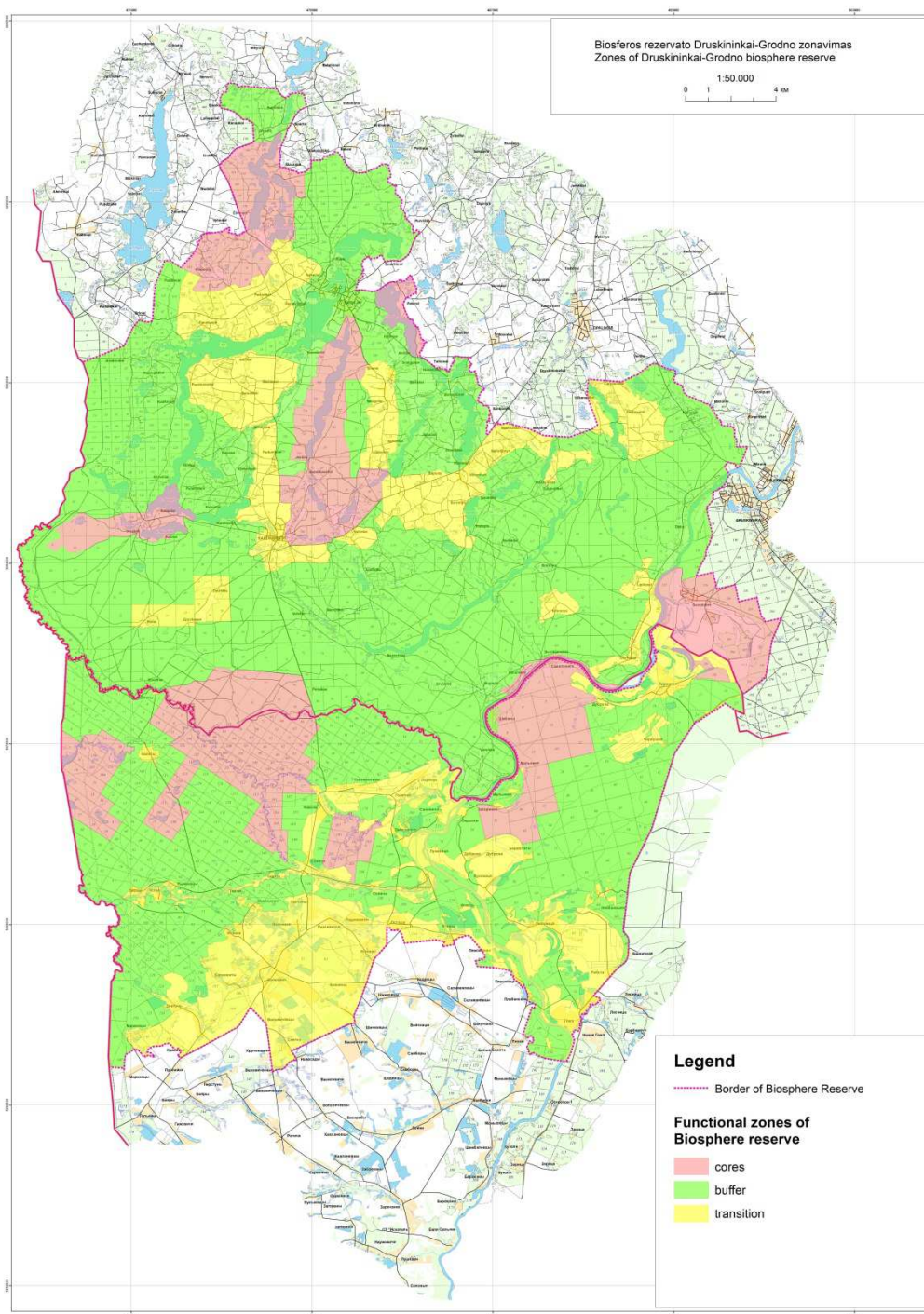
МАСШТАБ 1:50 000

Границы и площадь согласованы

Обозначение на карте	Наименование земельного участка	Площадь, га
	ОК "Юна"	527
	Р/СТП "Гродненская паша/форс"	88
	Л/ХЛ "Гродненская пуща"	1843
	Земли водоема	129
	Всего земель	2127

Условные обозначения

	границы заказника
	границы лесности
	полюс землеустройства

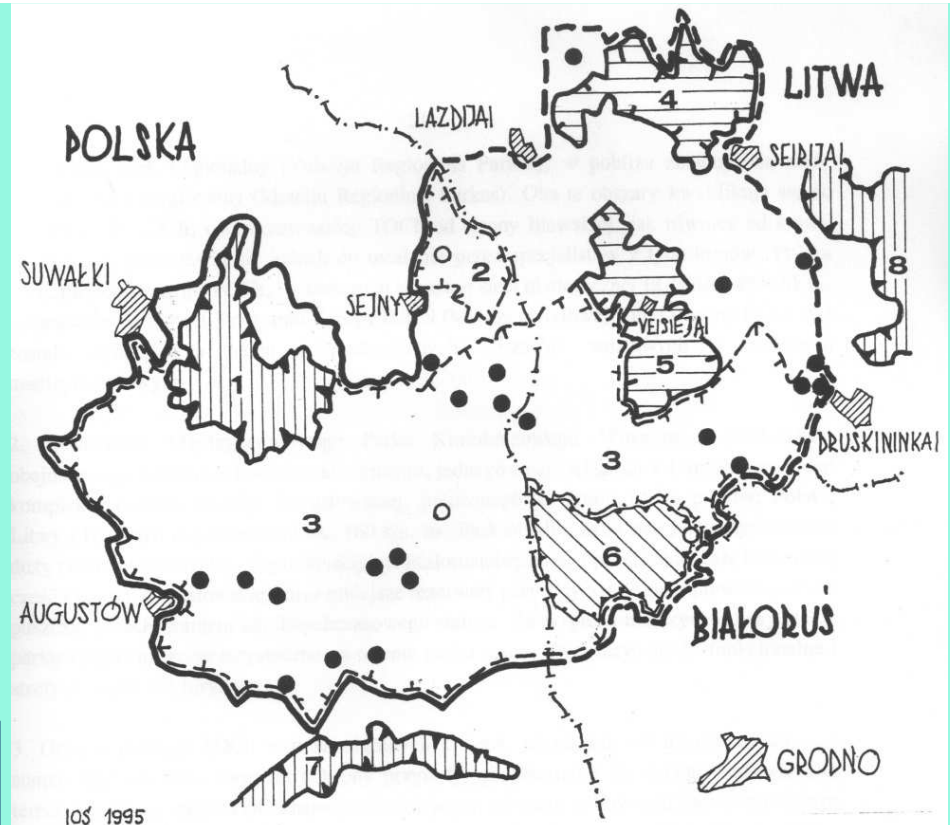


## Functional Zones of Druskininkai-Grodno Biosphere Reserve

*Augustowsko - Druskiennicki  
Transgraniczny Obszar Chroniony*

*Koncepcja Ochrony I Możliwości  
Rozwoju Funkcji Turystycznych  
Instytut Ochrony Środowiska  
Warszawa, 1995*

Augustov Channel is an object of historical  
and cultural heritage and popular  
international water touristic route



**KONCEPCJA OCHRONY AUGUSTOWSKO-DRUSKIENNICKIEGO  
TRANSGRANICZNEGO OBSZARU CHRONIONEGO**

skala 1 : 500 000

istn.	projekt.	
		transgraniczny obszar chroniony - część polska
		transgraniczny obszar chroniony - proponowana część litewska i białoruska
		parki narodowe (PN)
		zakaznik
		rezerваты przyrody
		parki krajobrazowe (PK) i regionalne (PR)
		główne miasta
		granice państw

1. Wigierski Park Narodowy
2. Sejneński PK (proponowany - koncepcja IOŚ)
3. Międzynarodowy PK "Puszcza Augustowska" (proponowany - koncepcja IOŚ)
4. Metelski PR (Meteliu Regioninis Parkas)
5. Wiejsiejski PR (Veisiejų Regioninis Parkas)
6. Zakaznik "Sopockinskij"
7. Biebrzański Park Narodowy
8. Dzukijski Park Narodowy

A close-up photograph of several purple flowers with bright yellow centers, set against a background of dry, brown pine needles and green moss. The flowers are in various stages of bloom, with some fully open and others as buds. The text "Thank you for attention!" is overlaid in white on the central part of the image.

Thank you for attention!

Special thanks for the input to the presentation to:  
Gedimnas Raščius and Genadij Dudko.